

Assoc. Prof. Bishnu Prasad Gautam

Wakkanai Hokusei Gakuen University,

Wakkanai Japan

Contact: bishnu35@hotmail.com, gautam@wakhok.ac.jp

Jini2.1 in Window 8

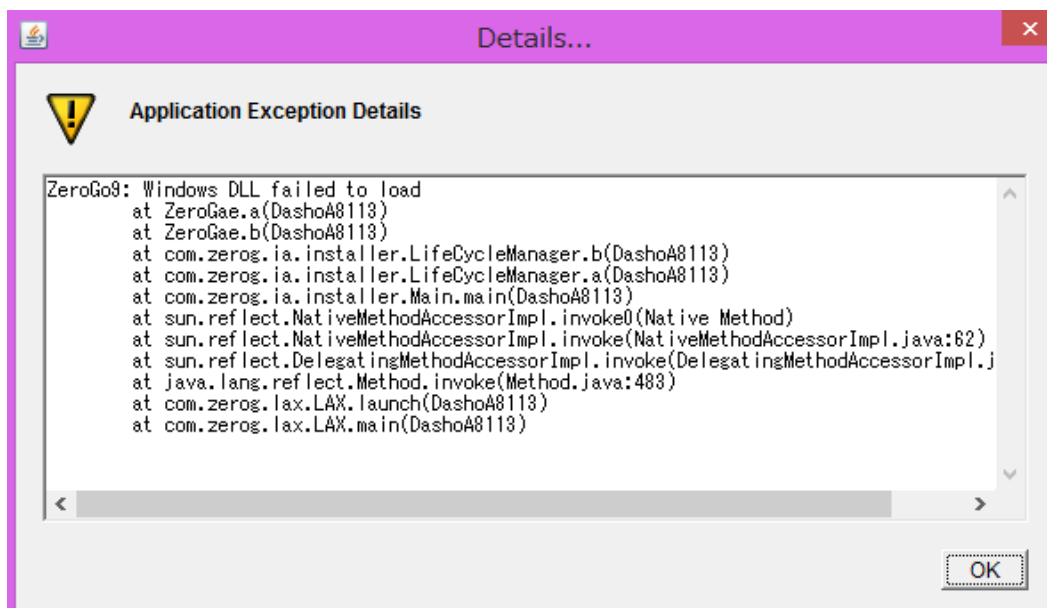
1. Download Installer

Jini installer can be downloaded from the URL below:

www.wakhok.ac.jp/~gautam/jyaguchiProject/jini2_1_installer.rar

Extract the file and double click the installer.

You might get the following error:

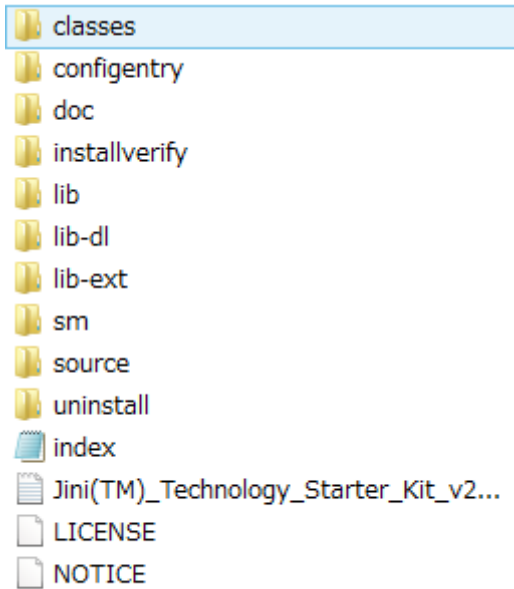


2. That means your installer does not work in compatibility mode. Sometimes, it will work once you right click the installer and select the older version. Do not panic, you have other way to make it run. Please read the following steps carefully.

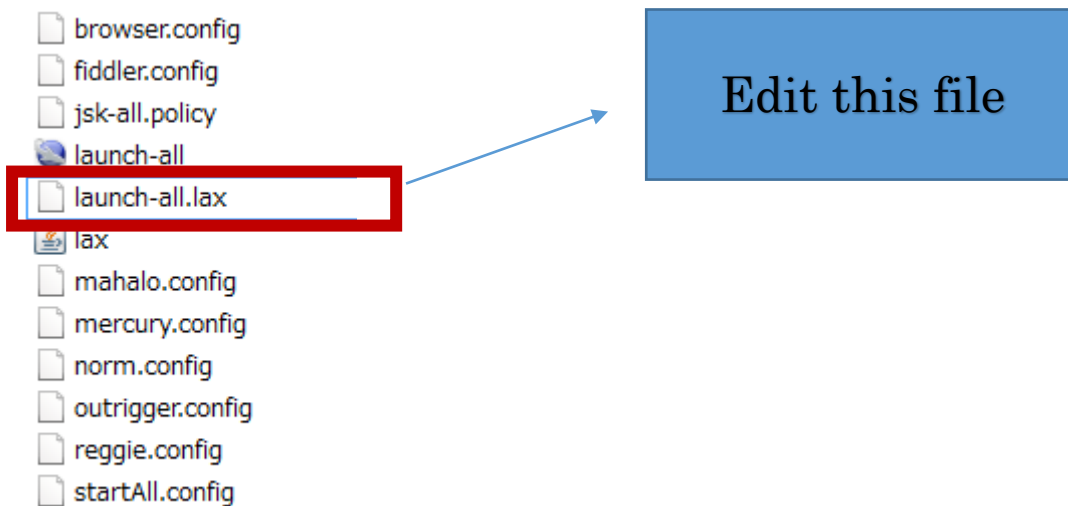
3. If no.2 does not work, then copy the entire files from the URL given below:

www.wakhok.ac.jp/~gautam/jyaguchiProject/jini2_1_all_files.rar

Extract the above rar files and check if the folder structure is as per below or not.



4. This still does not work. So go to installverify -> support and open launch-all.lax file with your editor.



5. Set your environment such as path of folders and java as per this file. Do not forget to set the path of java as per your environment.

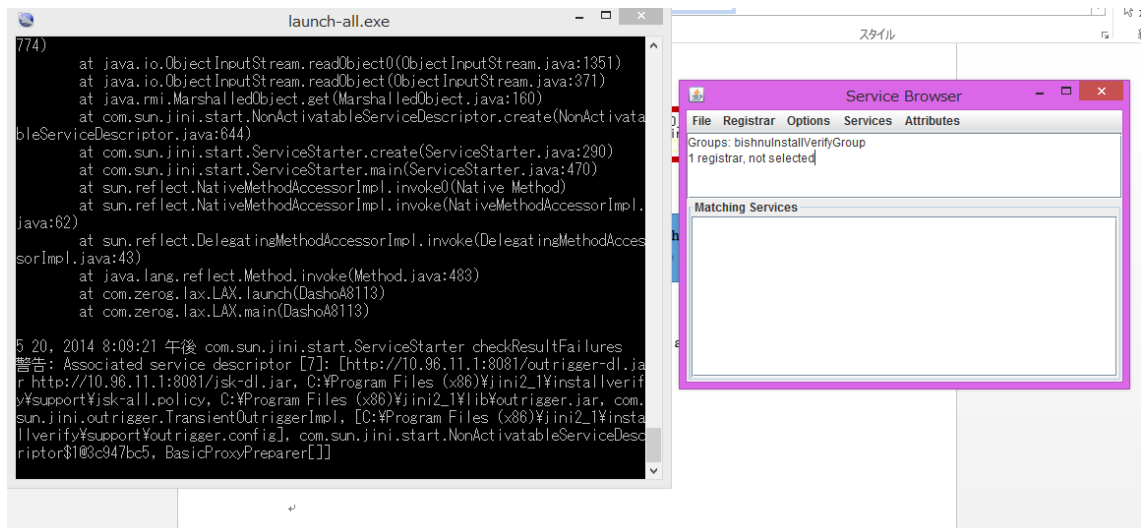
I have copy and pasted all the extracted folders of jini2_1 inside C:\Program Files (x86). However my java was located in C:\Program Files\Java. So, I changed the path in the launch-all.lax file as per below:

```
# LAX.NL.CURRENT.VM
# -----
# the VM to use for the next launch

#lax.nl.current.vm=C:\Program Files (x86)\Java\jdk1.6.0_21\bin\java.exe
lax.nl.current.vm=C:\Program Files\Java\jdk1.8.0_05\bin\java.exe
```

Comment out the first line and write the path of your java as shown above.

6. Start Jini Services by clicking Launch-All icon located at InstallVerify folder (e.g C:\Program Files (x86)\jini2_1\installverify)



7. Congratulation!. Now you are able to run Jini2.1 in Windows 8 and also your jinni is running over java 1.8. I think this tutorial is helpful for you who are Jini Fans. I will write River tutorial in my next article. Contact me at given email above, if you are any problem